



# STUCCHI

Sistemi di aspirazione e distribuzione energia

# Catalogue

Dusts exhausters

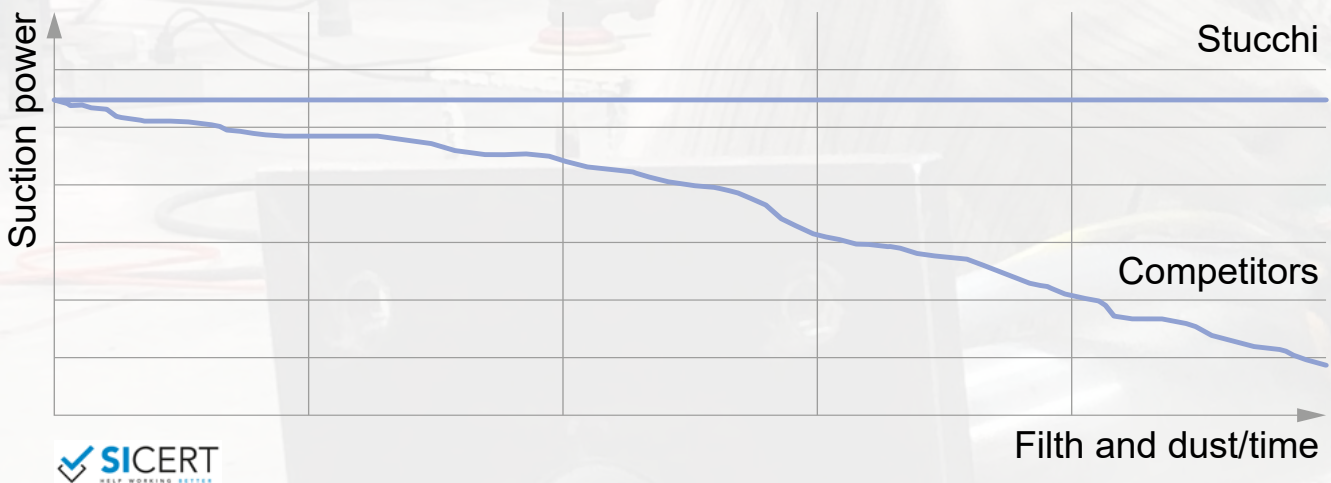
Energy distribution





# Design and realisation

## Working efficiency and suction power



Experience, efficiency, reliability and constant cooperation.

Stucchi is the whole of these things.

We are not only suppliers, in us you can find real colleagues in the suction field; we support our customer during the whole production process: from the beginning of the process up to the perfect conclusion.

We guarantee the filtering system for 5 years, as you can find in our operation and maintenance manual, in the face of a high-quality mechanical technology.

The heart of a vacuum cleaner is not the motor, is the filter. This is the reason why Stucchi decided to ensure their complete efficiency in order to offer perfectly working machines also after 20-25 years.

We are addressing to body shops, carpenter's shops, mechanic industry (metal workers and repair shops) and to the nautical industry (shipyards, yacht producers and vessels maintenance).

Our strength, in addition to the suction power, is given by the solid and executive design, as a result of a long planning experience.

The research and development department – respecting a fast process – studies the idea, projects and actualizes it customizing solutions ad hoc, respecting customers' needs and requirements

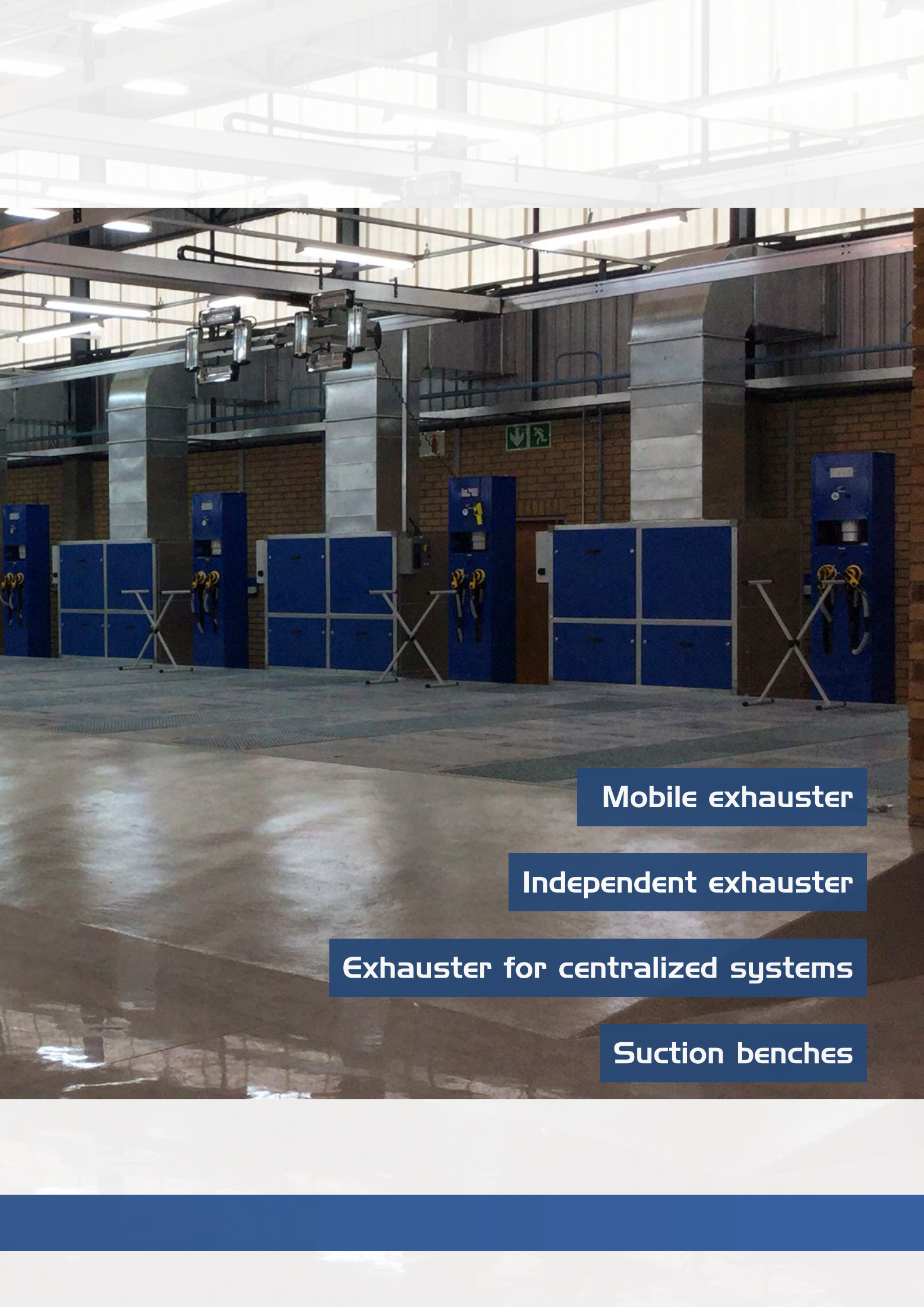


# 1

# Dusts exhauster







**Mobile exhauster**

**Independent exhauster**

**Exhauster for centralized systems**

**Suction benches**



## Mobile exhausters

Our mobile exhausters are designed to permanently solve the problem of dust dispersion generated by sanding and polishing.



The self-cleaning filter system, unique in its range of reference, is derived from the centralized industrial systems and allows to keep the filters always clean which do not require any maintenance. The use of a tool automatically starts the suction turbine that will turn off when you stop working, thus reducing fuel consumption.

We also have a line of sanding systems completely with compressed air with low consumptions, ideals for areas that require ATEX.





## ST1-C

Voltage: 230V 50Hz

Control voltage : 12Volt

Suction volume: 150m<sup>3</sup>/h

Suction depression: 210 mbar

Supply air pressure: Max 8 bar

Vacuum turbine 1,3kW

Noise 67 dBA

Sizes: 450 x 450 x 800 mm

Weight: 41,5 Kg

*Reserve tank for the filter's cleaning, electric and pneumatic controls, equipped with a 5mt. suction hose. Powered by compressed air, it doesn't need electrical supply.*



## ST2-C

Voltage: 230V 50Hz

Control voltage : 12Volt

Suction volume: 300m<sup>3</sup>/h

Suction depression: 210 mbar

Supply air pressure: Max 8 bar

Vacuum turbine 1,3+1,3kW

Noise 68 dBA

Sizes: 450 x 450 x 800 mm

Weight: 47 Kg

*2 operators and 2 high performance monophase motors, manual and automatic cleaning filters, electric and pneumatic controls, equipped with two 5mt suction hoses.*

**Customize your ST with KIT PC to make it even more functional**







## AIRone

Voltage: missing

Control voltage : missing

Vacuum turbine missing

Sander's vacuum volume: 35m³/h

Air consumption: 450 l/min

Supply air pressure: Max 6 bar

Noise 58 dBA

Sizes: 450 x 450 x 800 mm

Weight: 13Kg

*Exclusively powered by compressed air, it doesn't need electric supply. Completed with sander and a 3 mt. Suction hose.*



## ST2-TF

Voltage: 230V 50Hz

Control voltage : 24 Volt

Suction volume: 210 m³/h

Suction depression: 200 mbar

Supply air pressure: Max 8 bar

Vacuum turbine 1,5 kW

Noise 68 dBA

Sizes: 500 x 1000 x 900 mm

Weight: 60 Kg

*Equipped with a flat surface, suction hoses and sander's holder, accessory shelves, paper boxes manual and automatic cleaning filters, electric and pneumatic controls, equipped with two 5mt suction hoses.*







## Exhauster for wall installation

Exhauster for wall installation designed for the suction and the filtering of dry dusts generated by sanding and polishing.



Industrial exhauster designed for wall installation, ideal for the connection with the telescopic arm. Automatic and manual starter of the single-phase turbine. Equipped with a self-cleaning filtering system and completed with a support bracket.





## ST1-M

Voltage: 230V 50Hz

Control voltage : 24 Volt

Suction volume: 150 m<sup>3</sup>/h

Suction depression: 210 mbar

Supply air pressure: Max 8 bar

Vacuum turbine 1,3 kW

Noise 67 dBa

Sizes: 450 x 450 x 800 mm

Weight: 32,5 Kg

*1 operator. Automatic uses and adjustable suction on the front of the machine. Automatic and manual starter of the single-phase turbine. Self-cleaning filtering system. Completed with a support bracket.*



## ST2-M

Voltage: 230V 50Hz

Control voltage : 24 Volt

Suction volume: 300 m<sup>3</sup>/h

Suction depression: 210 mbar

Supply air pressure: Max 8 bar

Vacuum turbine 1,3 + 1,3 kW

Noise 72 dBa

Sizes: 450 x 450 x 800 mm

Weight: 34 Kg

*2 operators. Automatic uses and adjustable suction on the front of the machine. Automatic and manual starter of the single-phase turbine. Self-cleaning filtering system. Completed with a support bracket.*



## STM-TF

Voltage: 400V 50Hz

Control voltage : 24 Volt

Suction volume: 306 m<sup>3</sup>/h

Suction depression: 210 mbar

Supply air pressure: Max 9 bar

Vacuum turbine 2,2 kW

Noise 72 dBa

Sizes: 500 x 500 x 870 mm

Weight: 60 Kg

*3 operators. Automatic uses and adjustable suction on the front of the machine. Automatic and manual starter of the three-phase turbine. Self-cleaning filtering system. Completed with a support bracket.*



## Independent exhausters

Independent exhausters ideals for preparation zones, easy to install and to implement.



Suction module and electric energy and pneumatic supplier. Ideal for preparation zones, it can be used as a built-in module or as a free installation. just connect it and the operator can work immediately. Like all Stucchi's products, is equipped with a self-cleaning filtering system that does not require any maintenance, automatic and programmable by the frontal touch-screen.

Suction starter with tools, both electric and with compressed air.

Available in different shapes, sizes and powers.





### ME-1 Compact

Voltage: 230V 50Hz  
 Control voltage : 24 Volt  
 Suction volume: 150 m<sup>3</sup>/h  
 Suction depression: 210 mbar  
 Supply air pressure: Max 8 bar  
 Vacuum turbine 1,3 kW  
 Noise 67 dBa  
 Sizes: 500 x 360 x 770 mm  
 Weight: 35 Kg  
 2 operators.



### ME-1P Compact

Voltage: 230V 50Hz  
 Control voltage : 24 Volt  
 Suction volume: 300 m<sup>3</sup>/h  
 Suction depression: 210 mbar  
 Supply air pressure: Max 8 bar  
 Vacuum turbine 1,3 +1,3 kW  
 Noise 72 dBa  
 Sizes: 500 x 360 x 770 mm  
 Weight: 38 Kg  
 2 operators.



### ME-1

Voltage: 230V 50Hz  
 Control voltage : 24 Volt  
 Suction volume: 150 m<sup>3</sup>/h  
 Suction depression: 210 mbar  
 Supply air pressure: Max 8 bar  
 Vacuum turbine 1,3 kW  
 Noise 67 dBa  
 Sizes: 500 x 400 x 2000 mm  
 Weight: 76 Kg  
 1 operator, equipped with a 7 mt. suction hose and a single-phase turbine. The front pocket allows to put the suction hose back inside it.





## ME-1P

Voltage: 230V 50Hz

Control voltage : 24 Volt

Suction volume: 300 m<sup>3</sup>/h

Suction depression: 210 mbar

Supply air pressure: Max 8 bar

Vacuum turbine 1,3 +1,3 kW

Noise 72 dBa

Sizes: 500 x 400 x 2000 mm

Weight: 86 Kg

*2 operators, equipped with two 7 mt. suction hoses and a single-phase turbine. The front pocket allows to put the suction hose back inside it.*



## ME-2

Voltage: 400V 50Hz

Control voltage : 24 Volt

Suction volume: 306 m<sup>3</sup>/h

Suction depression: 240 mbar

Supply air pressure: Max 9 bar

Vacuum turbine 2,2 kW

Noise 72 dBa

Sizes: 500 x 400 x 2000 mm

Weight: 124,5 Kg

*2 operators, equipped with three-phase turbine.*



## ME-2P

Voltage: 400V 50Hz

Control voltage : 24 Volt

Suction volume: 306 m<sup>3</sup>/h

Suction depression: 240 mbar

Supply air pressure: Max 9 bar

Vacuum turbine 2,2 kW

Noise 72 dBa

Sizes: 1000 x 400 x 2000 mm

Weight: 183 Kg

*2 operators, equipped with two 7 mt. suction hoses and a three-phase turbine. The front pockets allow to put the suction hoses back inside it.*







## Exhausters for centralised systems.

Exhausters designed for centralised systems.



Exhausters with an high-performance sleeve – filtering system, a cleaning-filter system automatic and programmable and a control panel “touch screen” that allows to monitor the functioning and regulate the cleaning ranges. High energy-saving guaranteed by a switching-on / off automatic system that starts the suction turbine in the moment when the first-tool starts and stops it a few seconds after the switching-off of the last tool.

4KW and 15KW machines can be equipped with inverter to keep the suction always efficient with the lowest consumption.

If requested, there are also available 9 kW, 11 kW or 15 kW power versions.





### ST3-TF

Voltage: 400V 50Hz  
 Control voltage : 24 Volt  
 Suction volume: 306 m<sup>3</sup>/h  
 Suction depression: 220 mbar  
 Supply air pressure: Max 9 bar  
 Vacuum turbine 2,2 kW  
 Noise 72 dBa  
 Sizes: 520 x 620 x 1350 mm  
 Weight: 96 Kg  
 3 operators..



### ST3-GV

Voltage: 400V 50Hz  
 Control voltage : 24 Volt  
 Suction volume: 320 m<sup>3</sup>/h  
 Suction depression: 250 mbar  
 Supply air pressure: Max 9 bar  
 Vacuum turbine 3 kW  
 Noise 72 dBa  
 Sizes: 650 x 720 x 1400 mm  
 Weight: 130,5 Kg  
 3/4 operators.



### ST4-TF

Voltage: 400V 50Hz  
 Control voltage : 24 Volt  
 Suction volume: 400 m<sup>3</sup>/h  
 Suction depression: 250 mbar  
 Supply air pressure: Max 9 bar  
 Vacuum turbine 4 kW  
 Noise 72 dBa  
 Sizes: 650 x 720 x 1750 mm  
 Weight: 140 Kg  
 Optional: inverter  
 4 operators. Pneumatic lifting of the dusts collecting tank.





### ST5-TF

Voltage: 400V 50Hz

Control voltage : 24 Volt

Suction volume: 540 m<sup>3</sup>/h

Suction depression: 270 mbar

Supply air pressure: Max 9 bar

Vacuum turbine 5,5 kW

Noise 72 dBa

Sizes: 520 x 1100 x 1750 mm

Weight: 221 Kg

Optional: inverter

*6 operators and pneumatic lifting of the dusts collecting tank.*



### ST7-TF

Voltage: 400V 50Hz

Control voltage : 24 Volt

Suction volume: 540 m<sup>3</sup>/h

Suction depression: 300 mbar

Supply air pressure: Max 9 bar

Vacuum turbine 7,5 kW

Noise 74 dBa

Sizes: 520 x 1100 x 1750 mm

Weight: 221 Kg

Optional: inverter

*8 operators and pneumatic lifting of the dusts collecting tank.*







## Mobile industrial exhausters ATEX also for centralized systems



Every exhauster prevents the creation of static electricity, the motor overheating and others tricks. All ATEX exhausters of the wide STUCCHI range respects and goes beyond the security qualification imposed by the legislation, being always equipped with certified ATEX motors by the constructor.

The following characteristics are as standard:

- Standard anti-static filters for exhausters EX Zone 21
- Certified ATEX motors at origin
- Electric components certified ATEX by the constructor





### ST2-TF EX

Voltage: 400V 50Hz

Control voltage : 24 Volt

Suction volume: 306 m³/h

Suction depression: 240 mbar

Supply air pressure: Max 8 bar

Vacuum turbine 2,2 kW

Noise 72 dBa

Sizes: 500 x 1000 x 900 mm

Weight: 60 Kg

Certification: II 3D c T 50°C

*Equipped with a flat surface, suction hoses and sander's holder, accessory shelves, paper boxes manual and automatic cleaning filters, electric and pneumatic controls, equipped with two 5mt suction hoses. With three-phase turbine certified ATEX.*



### ST3-TF EX

Voltage: 400V 50Hz

Control voltage : 24 Volt

Suction volume: 306 m³/h

Suction depression: 220 mbar

Supply air pressure: Max 9 bar

Vacuum turbine 2,2 kW

Noise 72 dBa

Sizes: 520 x 620 x 1350 mm

Weight: 96 Kg

Certification: II 3D c T 50°C

3 operators.



### ST3-GV EX

Voltage: 400V 50Hz

Control voltage : 24 Volt

Suction volume: 320 m³/h

Suction depression: 250 mbar

Supply air pressure: Max 9 bar

Vacuum turbine 3 kW

Noise 72 dBa

Sizes: 650 x 720 x 1400 mm

Weight: 130,5 Kg

Certification: II 3D c T 50°C

3/4 operators.





### ST4-TF EX

Voltage: 400V 50Hz

Control voltage : 24 Volt

Suction volume: 400 m³/h

Suction depression: 250 mbar

Supply air pressure: Max 9 bar

Vacuum turbine 4 kW

Noise 72 dBA

Sizes: 650 x 720 x 1750 mm

Weight: 140 Kg

Certification: II 3D c T 50°C

*4 operators pneumatic lifting of the dusts collecting tank. Available with or without inverter.*



### ST5-TF EX

Voltage: 400V 50Hz

Control voltage : 24 Volt

Suction volume: 540 m³/h

Suction depression: 270 mbar

Supply air pressure: Max 9 bar

Vacuum turbine 5,5 kW

Noise 72 dBA

Sizes: 520 x 1100 x 1750 mm

Weight: 221 Kg

Certification: II 3D c T 50°C

*6 operators and pneumatic lifting of the dusts collecting tank. Available with or without inverter.*



### ST7-TF EX

Voltage: 400V 50Hz

Control voltage : 24 Volt

Suction volume: 540 m³/h

Suction depression: 300 mbar

Supply air pressure: Max 9 bar

Vacuum turbine 7,5 kW

Noise 74 dBA

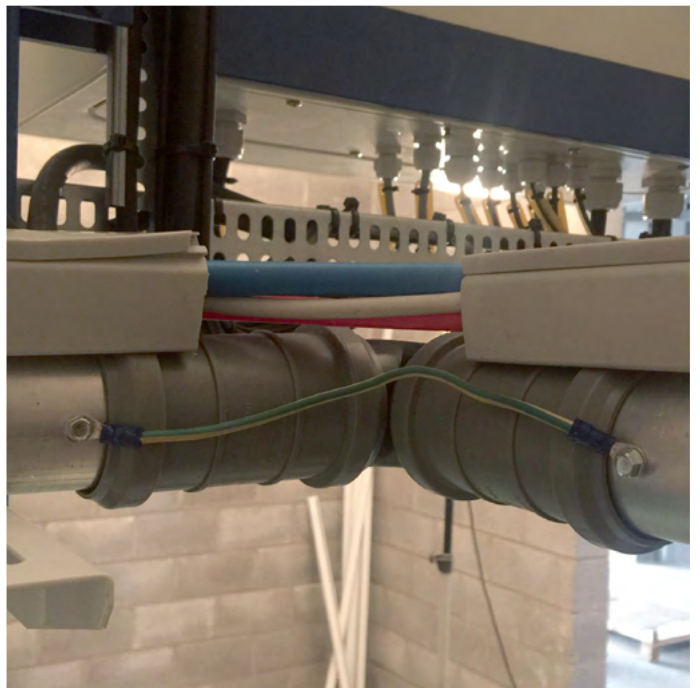
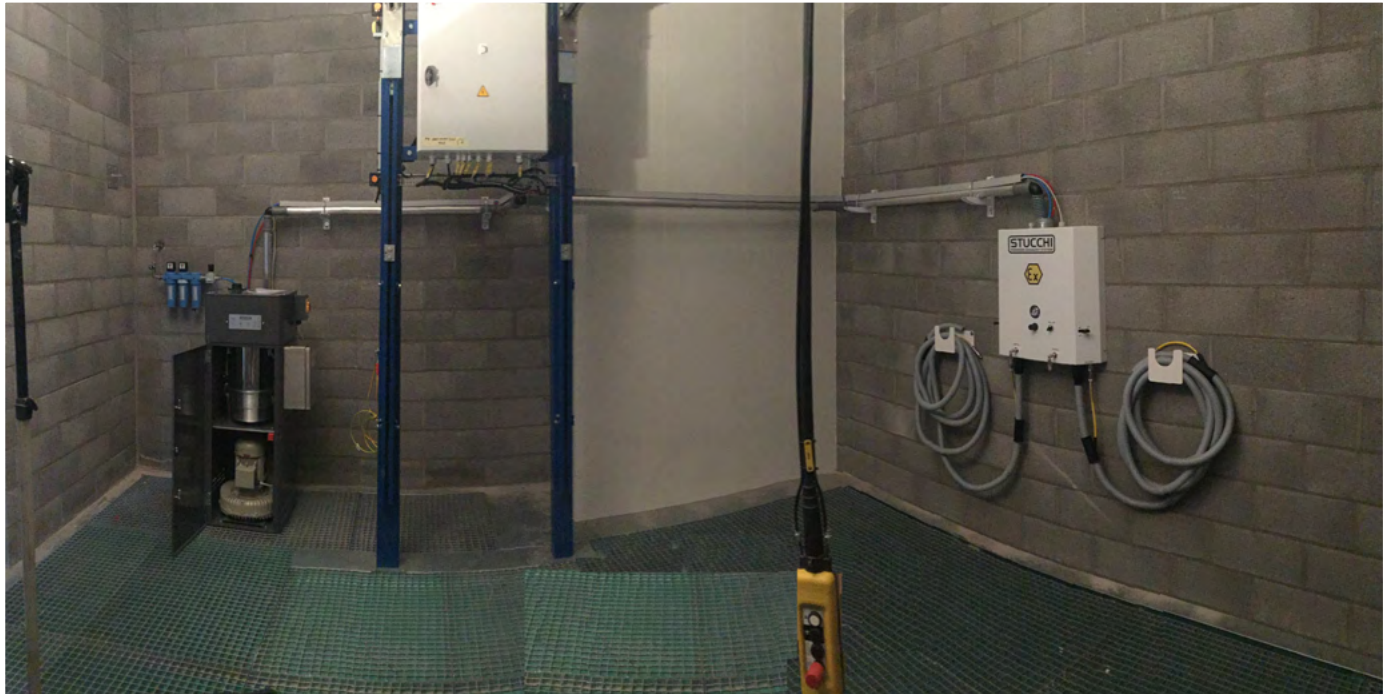
Sizes: 520 x 1100 x 1750 mm

Weight: 221 Kg

Certification: II 3D c T 50°C

*8 operators and pneumatic lifting of the dusts collecting tank. Available with or without inverter.*







# 2

## ENERGY DISTRIBUTION





**Binary system**

**Articulated arms**

**Multipurpose panels**

**Multipurpose hexagons**

**Multipurpose modules**



## Multipurpose hexagons

Multipurpose terminal element, equipped with two 230V electric sockets, two fittings for lubricated air, one adjustable fitting for dry air, and two suction fittings with pipe supports.



Start-up is automatic with both electrical and pneumatic tools. The suction system can be started using the remote start selector present on the hexagon.

They are also fitted with a manual device to stop the suction flow (cut-off switch) that guarantees to the system the maximum suction performance. Available also with sockets for electrical and pneumatic tools without suction.





## EM

ON/OFF selector for manual suction

N°1 Controlled dry air and control pressure gauge

N°1 Automatic air for tools

N°1 Automatic 230 V socket for tools

N°1 Suction nozzle

N°1 Trap, manual suction closing system

n°1 Direct air

1 Operator



## ESM-T

ON/OFF selector for manual suction

N°1 Controlled dry air and control pressure gauge

N°2 Automatic air for tools

N°2 Automatic 230 V socket for tools

N°2 Suction nozzle

N°2 Trap, manual suction closing system

2 Operators



## ESM-PT

ON/OFF selector for manual suction

N°1 Controlled dry air and control pressure gauge

N°2 Automatic air for tools

N°2 Automatic 230 V socket for tools

N°2 230 V 400V interlocked sockets

N°2 Suction nozzle

N°2 Trap, manual suction closing system

2 Operator



---

## Multipurpose panels

**Multipurpose panels with pneumatic and electric automatisms for one workstation.  
Ideal for built in installation in preparation zones or for free installation.**



The automatic starter is with both electric and pneumatic tools.  
The suction system can be started using the remote start selector on the panel.





## PZ-MP

ON/OFF selector for manual suction

N°1 Controlled dry air and control pressure gauge

N°1 Automatic air for tools

N°1 Suction nozzle

N°1 Trap, manual suction closing system

1 Operator



## PZ

ON/OFF selector for manual suction

N°1 Controlled dry air and control pressure gauge

N°1 Automatic air for tools

N°1 Automatic 230 V socket for tools

N°1 Suction nozzle

N°1 Trap, manual suction closing system

1 Operator



## PZP

INTERLOCKED SOCKETS

ON/OFF selector for manual suction

N°1 Controlled dry air and control pressure gauge

N°2 Automatic air for tools

N°2 Automatic 230 V socket for tools

N°2 Prese 230V 400V interbloccate

N°2 Suction nozzle

N°2 Trap, manual suction closing system

N°1 aria diretta

2 Operators



## PZP-1

ON/OFF selector for manual suction

N°1 Controlled dry air and control pressure gauge

N°2 Automatic air for tools

N°2 Automatic 230 V socket for tools

N°2 Suction nozzle

N°2 Trap, manual suction closing system

2 Operators



---

## Multipurpose modules

Module for the distribution of compressed air, electric energy and suction.







## MP-C

ON/OFF selector for manual suction

N°1 Controlled dry air and control pressure gauge

N°1 Automatic air for tools

N°1 Automatic 230 V socket for tools

N°1 Suction nozzle

N°1 Trap, manual suction closing system

1 Operator.

*Projected to occupy angles, equipped with 5mt suction hose. Equipped with a frontal pocket where it's possible to replace the suction hose.*



## MP-2

ON/OFF selector for manual suction

N°1 Controlled dry air and control pressure gauge

N°1 Direct air

N°2 Trap, manual suction closing system

N°1 Presa 230 V Schuko

Tasche frontali con:

N°2 Automatic air for tools

N°2 Suction nozzle

N°2 Automatic 230 V socket for tools

2 Operators.

*Ideal for free installation or built in the preparation zone. Equipped with a frontal pocket where it's possible to replace the suction hose.*



## MP-D

Closet with shelves

Double door

N°6 shelves

*Closet with shelves. Ideal for free installation or built in the preparation zone.*



## MP-CM

Cabinet with rollers for masking.

Ideal for free installation or recessed in preparation areas.

All MP-CM modules allow you to apply the tape at the same time to the paper.

The product can be equipped with 3 different types of paper reels, 1 reel of film storage and a basket waste bin.

Masking papers 85 cm, 45 cm or 18 cm

Film reels 90 cm

Dimensions: 1000x 400 x 2000 mm

*Paper not supplied*



## Articulated arms

Articulated arms installed on the wall with a support bracket, used to support and move the multifunctional hexagons following the operator needs.



Articulated arms are available in three different measures B5 (5 m) e B6 (6 m) (if requested also 7 m). with this solution it's possible to remove the obstacle of electric cables, compressed air tubes and suction tubes.





The image shows a Stucchi B5 robotic arm mounted on a wall. It features a grey metal arm with a blue flexible cable running along its length. The arm is connected to a yellow control unit with the Stucchi logo. A blue cable is coiled around the control unit. The background is a blurred industrial setting with metal structures and a yellow vertical beam.

### B5

Operating range 180°

Weight 80 Kg (only the arm)

Total length: mt. 5



The image shows a Stucchi B6 robotic arm mounted on a wall. It features a grey metal arm with a blue flexible cable running along its length. The arm is connected to a yellow control unit with the Stucchi logo. A blue cable is coiled around the control unit. The background is a blurred industrial setting with metal structures and a yellow vertical beam.

### B6

Operating range 180°

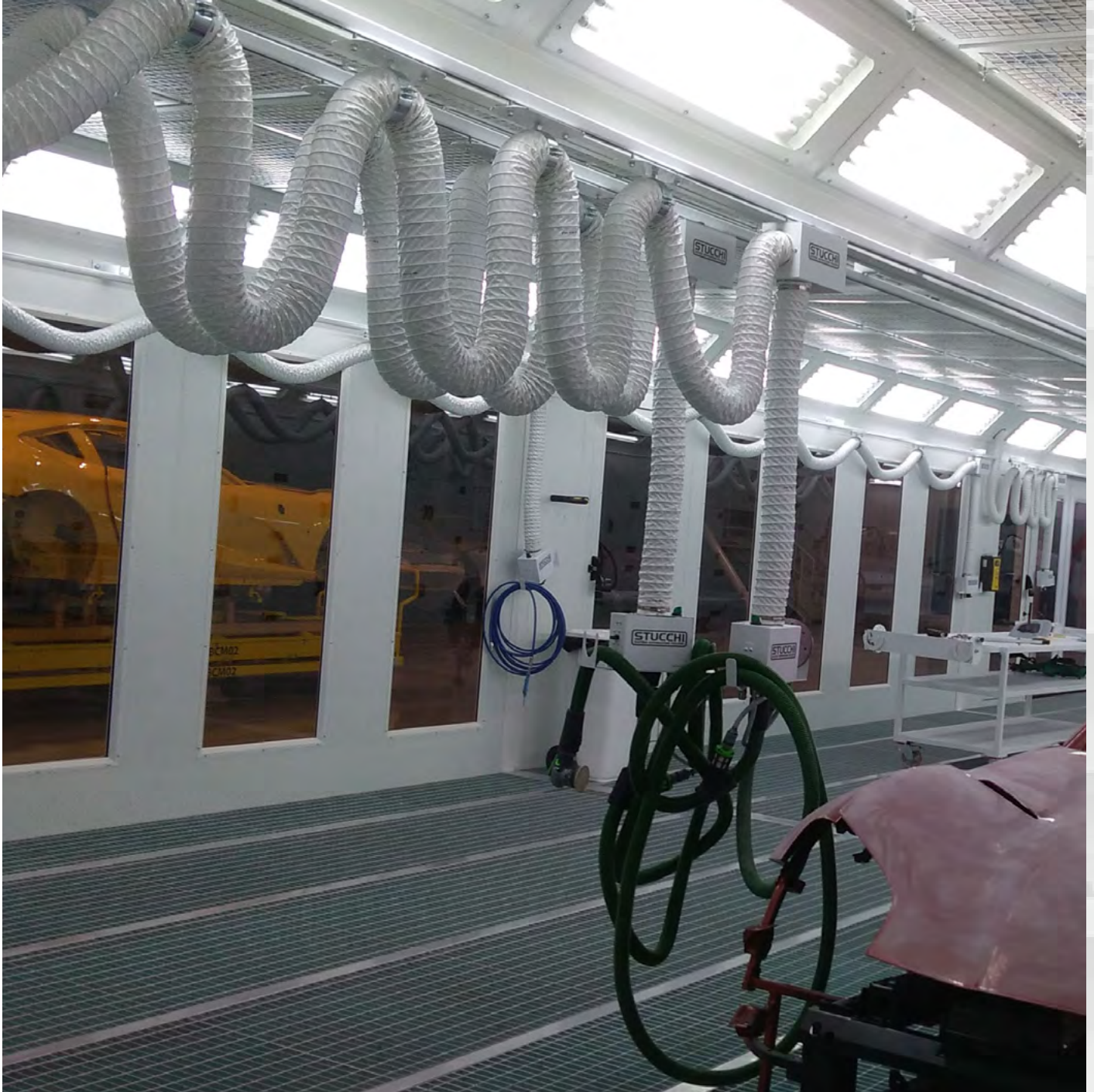
Weight 90 Kg (only the arm)

Total length: mt. 6



## Binary system

Sliding aerial system for the distribution of compressed air, electrical energy and electric energy.



It enables users to position the service control unit next to the workstation and avoid therefore installing bulky loose cables or routing pipes across the work areas. It's ideal to have more security at the workplace and to have a more professional and tidier organisation.





## BIN-CA-06

Total length mt. 6

Length 1 module mt. 2 (tot. 3 modules)

Total weight 186 Kg

Weight 1 module 62 Kg

*Excluded central control units, available with integrated suction.*



## ST-BIN

Total length mt. 12

Length 1 module mt. 12

Total weight 130 Kg

Weight 1 module 60 Kg



## Suction benches

Suction benches for sanding equipped with independent dust filtering system and motor. They don't need a connection with the centralized system.



Very quiet engine, 72dB, with a rubber-coated flat surface anti-slip and scratch resistant. Available also the Combi version with a double suction, it is possible to have an orbit sander and a suction surface in one product, removing the produced dust at 100%. Equipped with filters of a F9 filter class, perfects for sanding dust, but it is possible to build different types, H class for dusts dangerous for the health, ATEX certified for potentially explosives dusts and/or even use some pre-filters for different needs, like paint and spray hood, like a metallic mail for a protection against sparks for grinding and deburring with abrasives.





## ST2-COMBI

Voltage: 230V 50/60 HZ  
 Control voltage : 12 Volt  
 Suction volume: 300 m<sup>3</sup>/h  
 Suction depression: 210 mbar  
 Supply air pressure: Max 8 bar  
 Vacuum turbine 1,3 + 1,3 kW  
 Noise 68dBa  
 Sizes: 500x1000x900 h  
 Weight: 57 Kg  
 1 operator  
 Equipped with a 5 mt. suction hose.



## M1-JOLLY

Voltage: 230V 50/HZ  
 Suction volume: 2000m<sup>3</sup>/h  
 Vacuum turbine 750 W - 3 speedy  
 Sizes: 800x1000x900 h  
 Weight: 80,5Kg  
 Optional: wheels, external drain, extension  
 Vertical cartridge filter to collect dust in the removable pockets with manual opening.  
 Manual start.



## M1-JOLLY COMBI

Voltage: 230V 50/HZ  
 Suction volume: 2000m<sup>3</sup>/h  
 Vacuum turbine 750 W - 3 speedy  
 Sizes: 800x1000x900 h  
 Weight: 107,5 Kg  
 Optional: wheels, external drain, extension  
 Vertical cartridge filter to collect dust in the removable pockets with manual opening.  
 Manual start.



## M1-SMARTY

Voltage: 230V 50/HZ  
 Suction volume: 1000m<sup>3</sup>/h  
 Vacuum turbine 350 W - 3 speedy  
 Sizes: 1200 x 800 x 800 + 400h alzata luci  
 Weight: 119 Kg  
 Optional: wheels, external drain  
 Vertical cartridge filter to collect dust in the removable pockets with manual opening.  
 Manual start.





### M1-SMALL

Voltage: 230V 50HZ

Suction volume: 2000 m<sup>3</sup>/h

Vacuum turbine 750 W - 3 speedy

Sizes: 1000 x 1000 x 1000

Weight: 111 Kg

Optional: wheels, external drain

*Vertical cartridge filter to collect dust in the removable pockets with manual opening.*

*Manual start*



### M1

Voltage: 400V 50HZ

Suction volume: 5000 m<sup>3</sup>/h

Vacuum turbine 1,5kW

Sizes: 2000 x 1000 x 900 h

Weight: 194 Kg

Optional: wheels, external drain, ATEX motor, inverter

*Vertical cartridge filter to collect dust in the removable pockets with manual opening.*

*Manual start*



### M1-COMBI

Voltage: 400V 50HZ

Suction volume: 5000 m<sup>3</sup>/h

Sanding suction volume: 150 m<sup>3</sup>/h

Vacuum turbine 1,5kW

Sanding vacuum turbine: 1,3 kW

Sizes: 2000 x 1000 x 900 h

Weight: 230 Kg

Optional: wheels, external drain, ATEX motor, inverter

*Vertical cartridge filter to collect dust in the removable pockets with manual opening.*

*Manual start*





## Components

All special components with which we produce our machines are all in our properties.  
This guarantee a constant and continue assistance during the years.

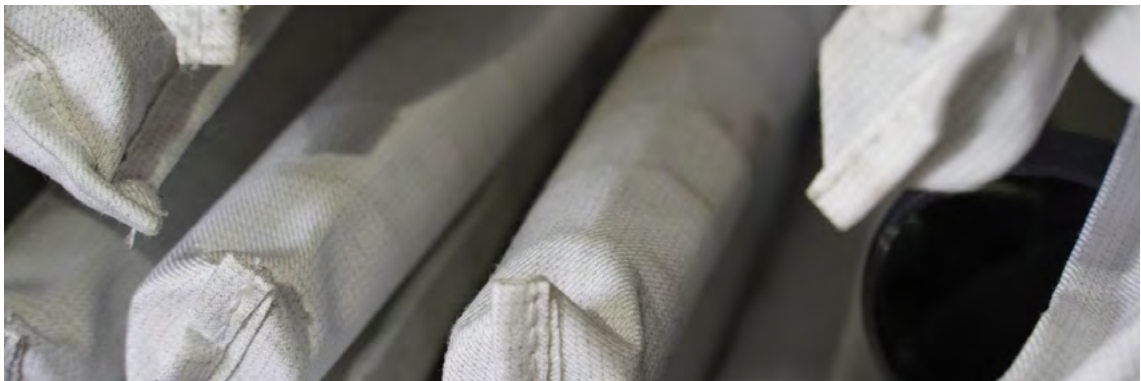
### ELECTRONIC BOARDS

Thanks to the cooperation with the biggest electronic producers, we project out controls. Touch screen buttons protected with membranes against dusts and water proof.  
LED lights for an easy reading of the functions.



### FILTERING SYSTEM

Thanks to a long experience and to the research of innovative materials, we realise a self-cleaning filtering system guaranteed for 5 years.  
We delete times of maintenance and we provide clean air.



### PLASTIC STAMPS AND MECHANICAL MANUFACTURING

We project stamps for our models, particulars given by plastic injections and 3D stamps. In addition, thanks to modern machines, we product the rest of the production.













**Stucchi I950 S.r.l.**  
**Exhausting and energy supplying systems**  
Via M.te Bisbino, 24 - 20021 Baranzate (MI)



**Consolidated market places**  
Europe, Japan, Thailand, Vietnam, South Africa, Canada



**Next expansion market places**  
U.S.A, Arabia, Oceania, Russia

# STUCCHI

Sistemi di aspirazione e distribuzione energia

**Stucchi 1950 srl**

**Exhausting and energy supplying systems**

**Registered office: Via Arcisate, 15 - 20157 Milan (MI)**

**Main office: Via M.te Bisbino, 24 - 20021 Baranzate (MI) Tel.: +39 02  
36.53.89.04**

**Fax: +39 02 39.29.27.06**

**www.stucchi.net**

**info@stucchi.net**

